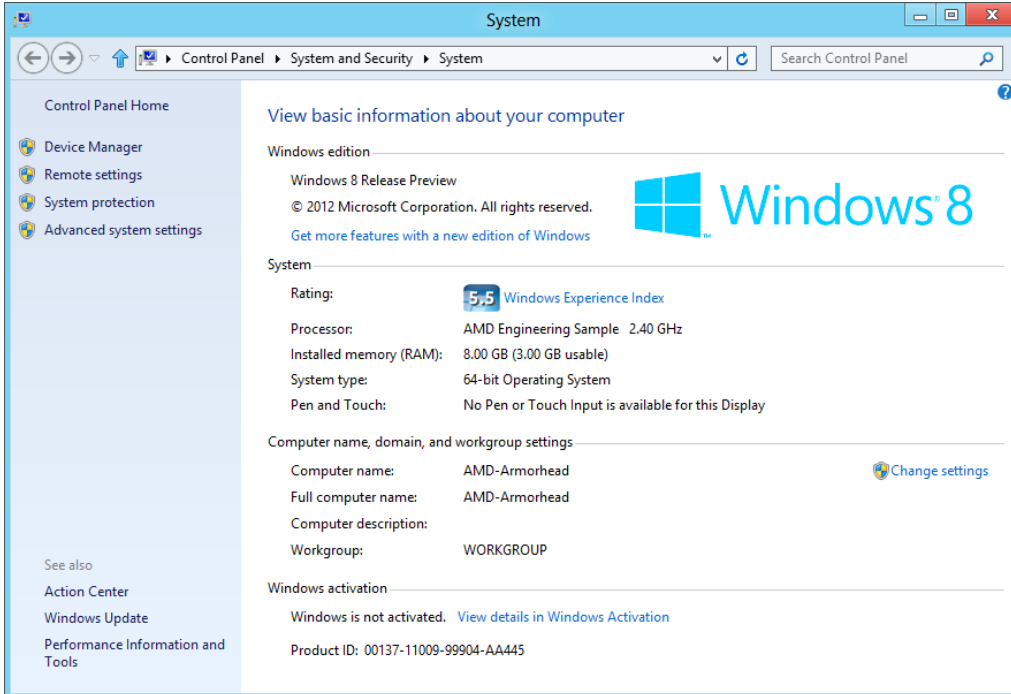


Product: USB to RS-232 Serial Converter

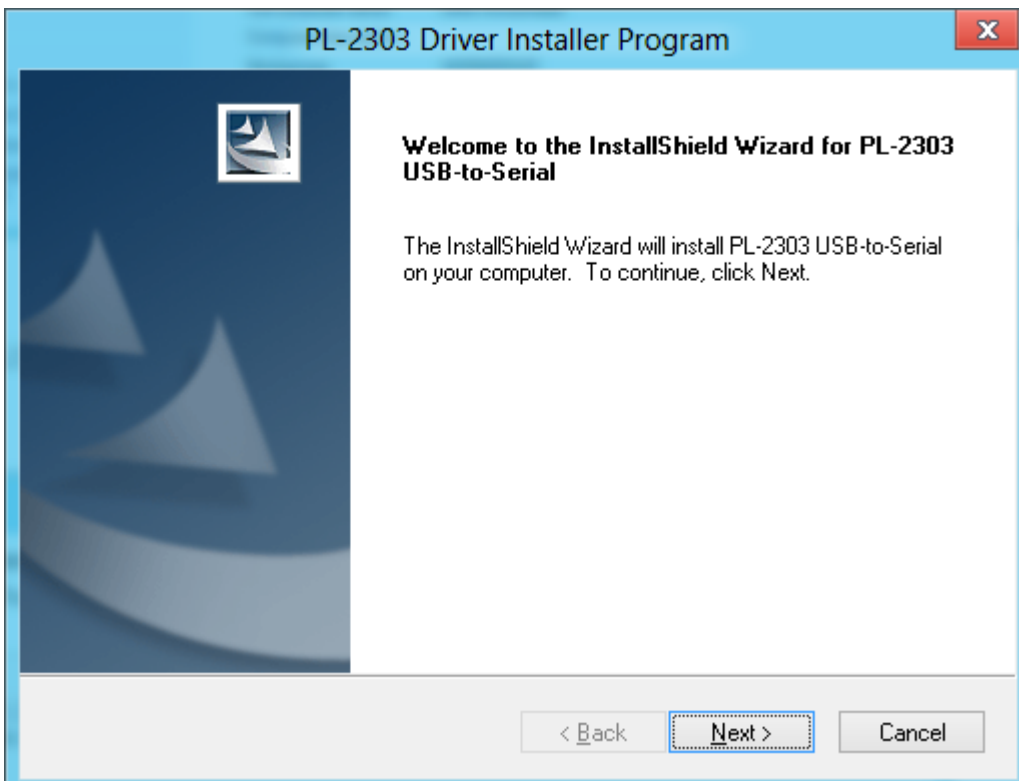
Chipset: Prolific PL203TA

Windows 8 Driver Installation

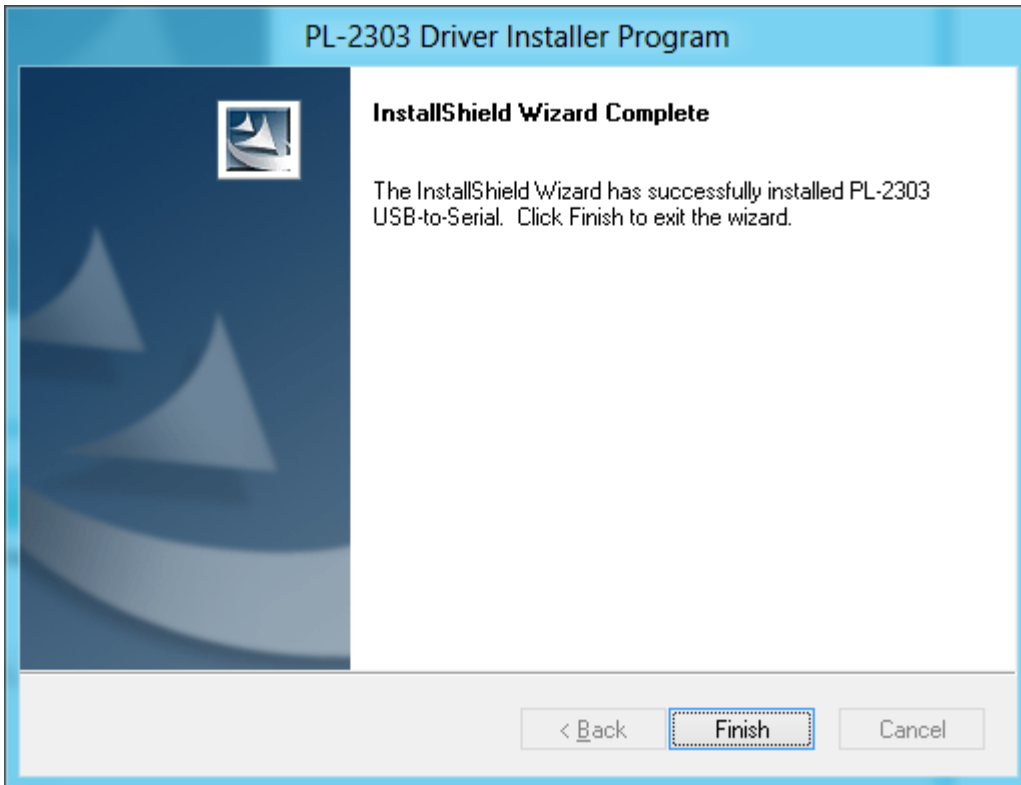
This section will guide you how to install the 42811 / 42812 USB to RS-232 Serial Converter under Windows 8 Operating System. You can download the latest Driver Installer program from the product page on the LINDY website www.lindy.com.au



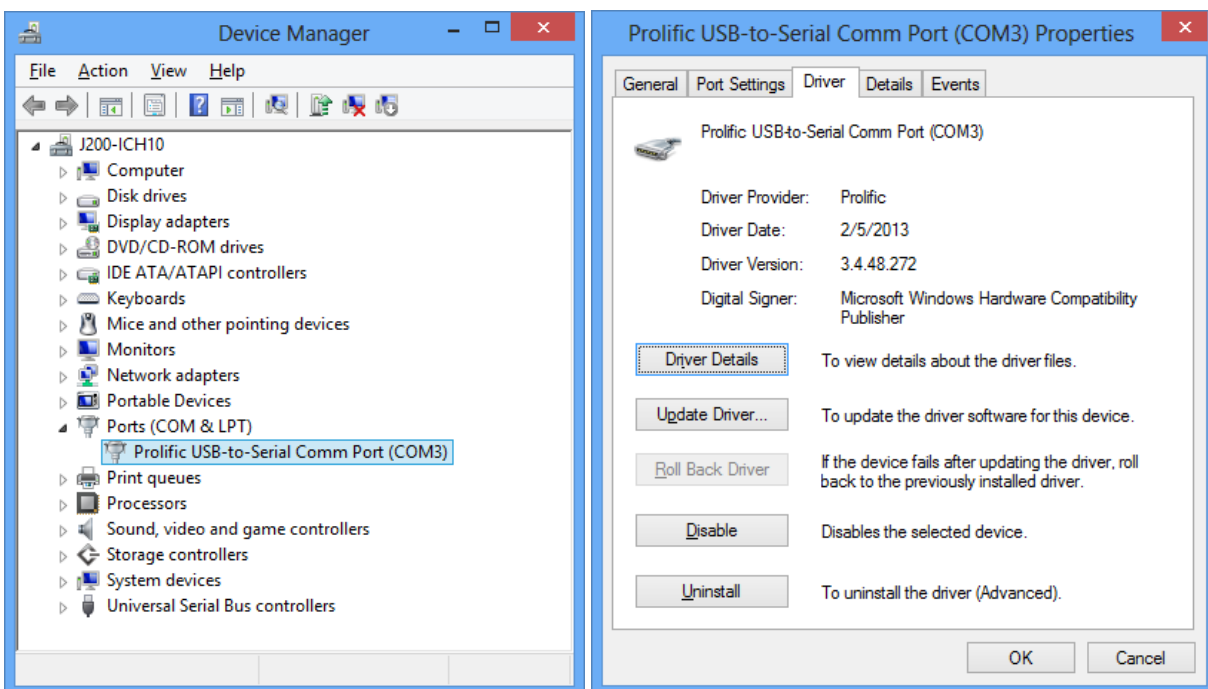
1. Power on your computer and boot to Windows 8. Run or double-click the Windows Driver Installer v1.8.0 program.
2. The InstallShield Wizard will be displayed to inform you that the PL-2303 USB-to-Serial driver will be installed on your computer. Click Next to continue.



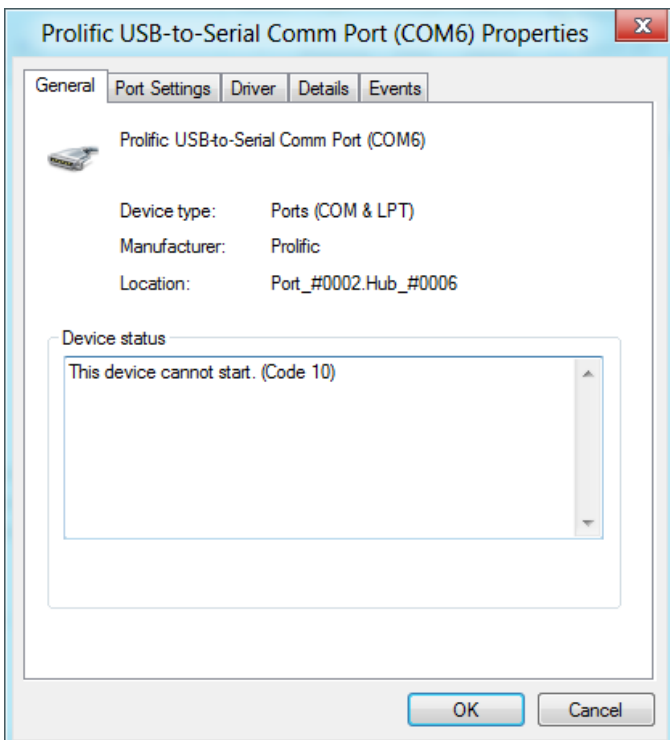
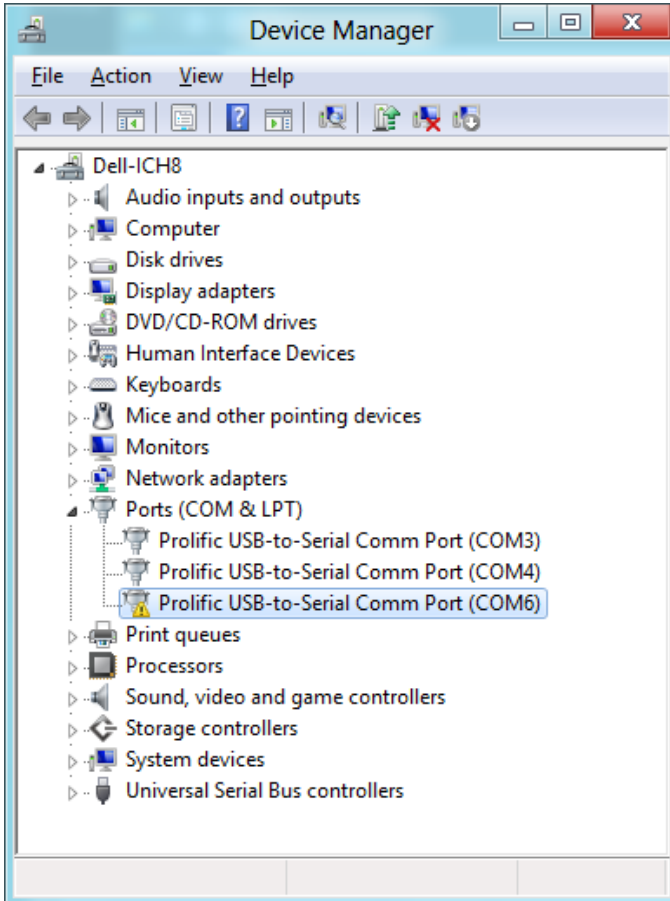
3. The PL-2303 Driver Installer program will then start to install the drivers needed. Click the Finish button to close the InstallShield program.



4. Plug in the USB to Serial adapter to the PC USB port. Windows should detect the driver as "Prolific USB-to-Serial Comm Port". Go to Device Manager and check for the device and the COM port number assigned by Windows. You can also check the driver version by right-clicking on the "Prolific USB-to-Serial Comm Port" device and select Properties and Driver tab.



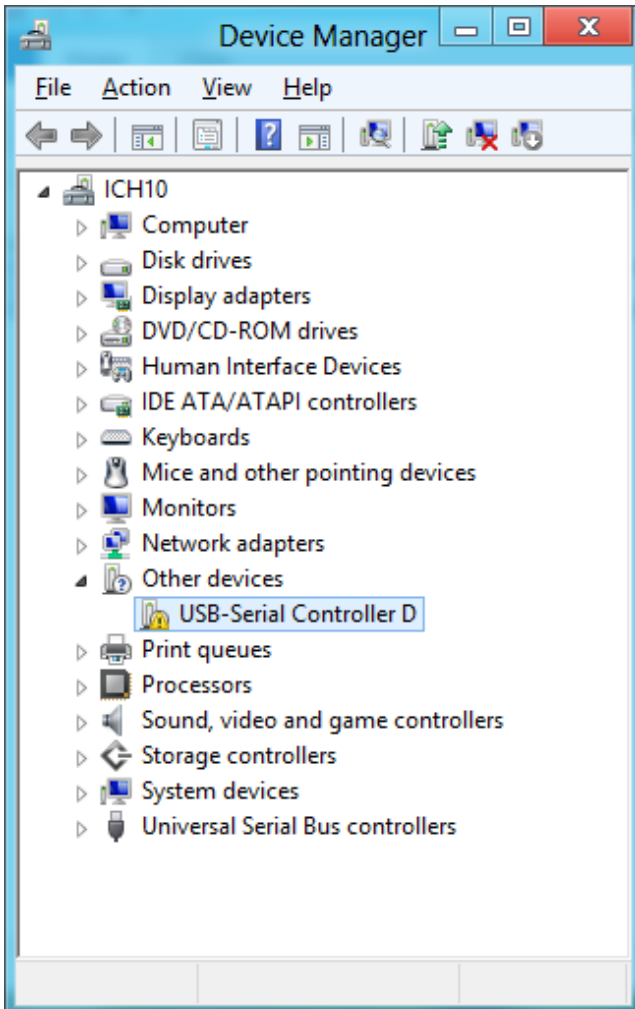
5. The COM Port number for the PL-2303 is assigned by the Windows Operating System. If you encounter a device that shows a yellow mark (Error Code 10), you need to check if that device is using an old version Prolific chip (PL-2303HXA or PL-2303XA). As mentioned in the previous sections, Prolific does not support old version chips in Windows 8.



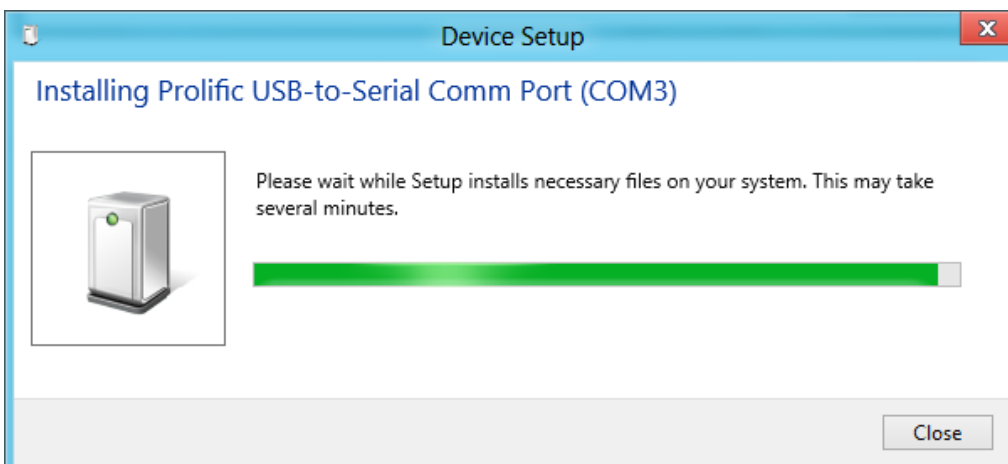
Windows 8 Driver Installation (via Windows Update)

This section will guide you on how to install the 42811 / 42812 USB to RS-232 Serial Converter Windows Driver via Windows Update. You will need an Internet connection to be able to automatically download and install the drivers via Windows Update.

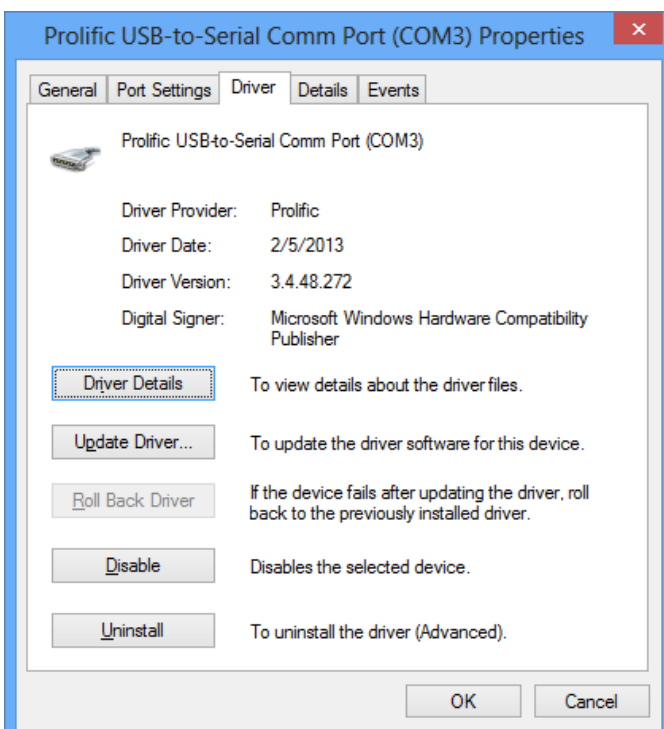
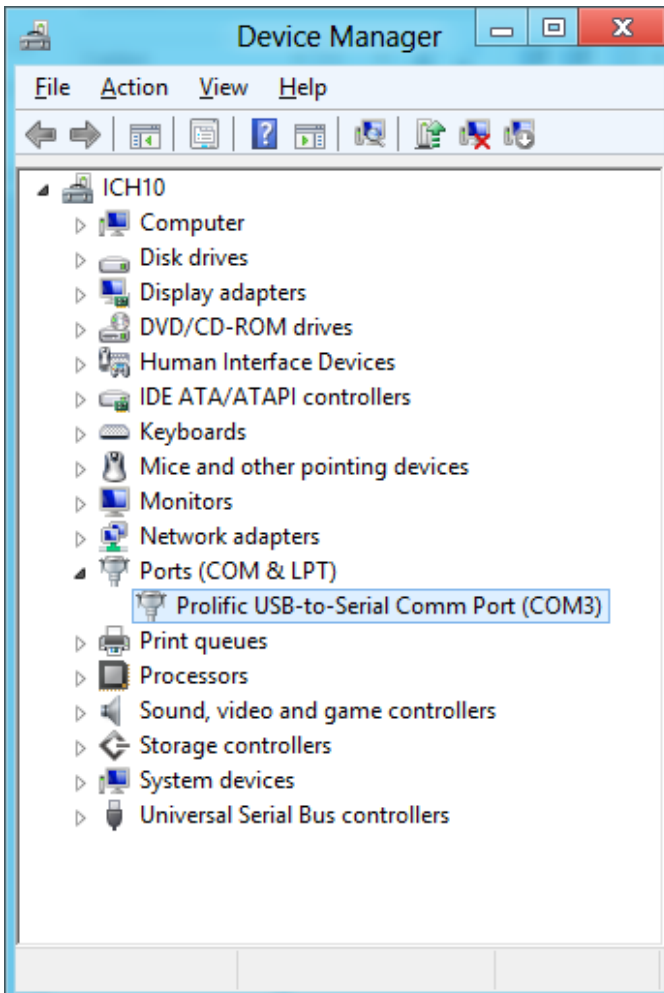
1. Check if your Internet connection is OK. Plug in 42811 / 42812 USB to RS-232 Serial Converter cable.



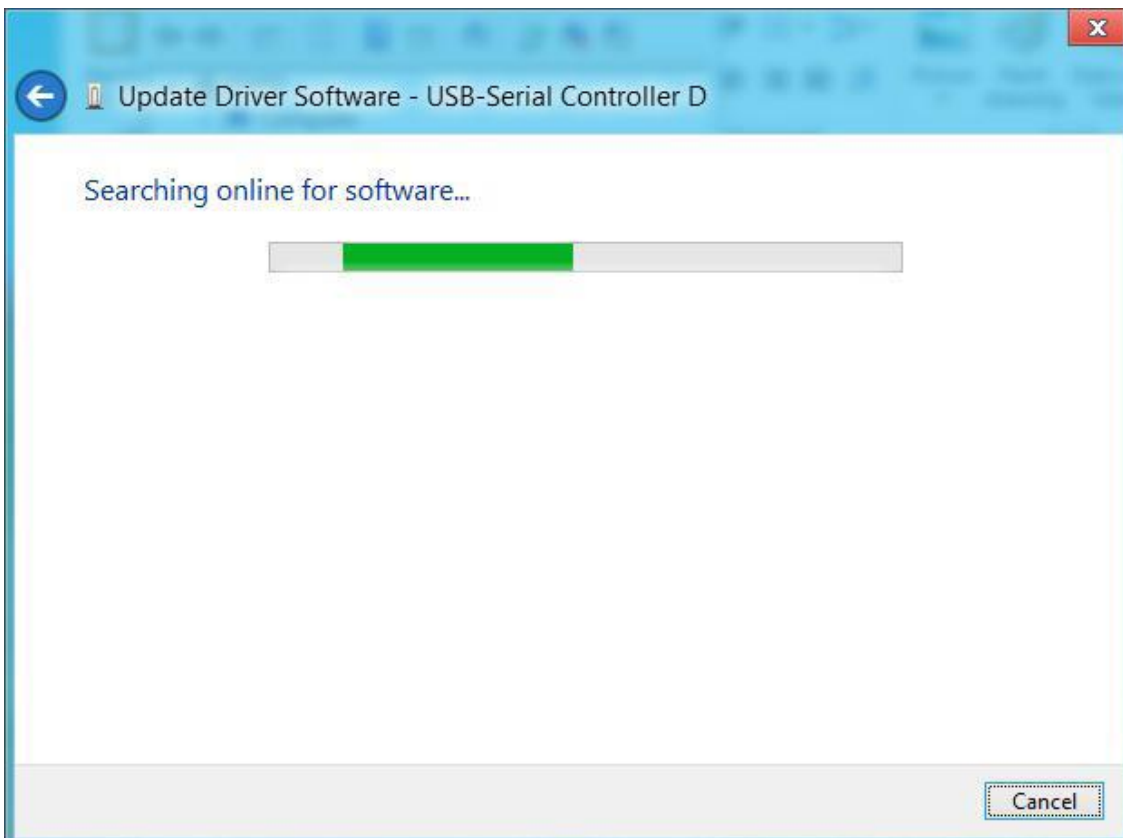
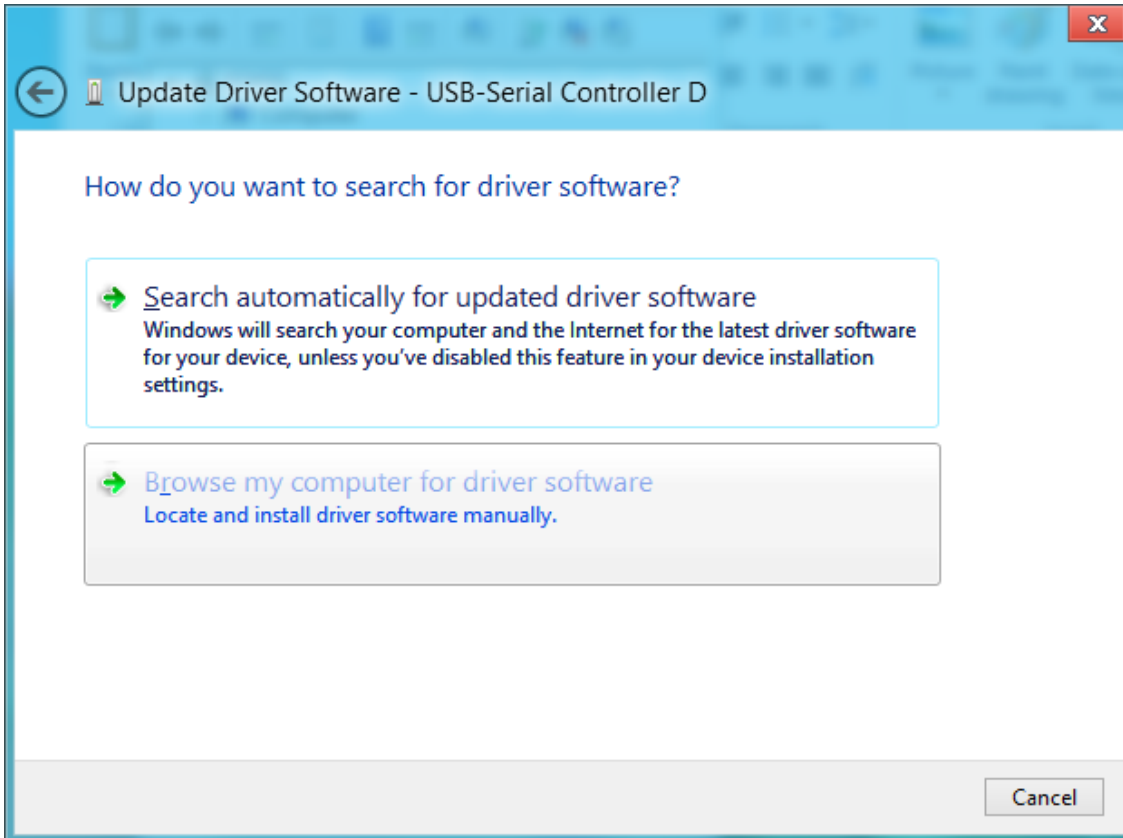
2. Windows will automatically check Windows Update if driver is available and will download and install the driver instantly.

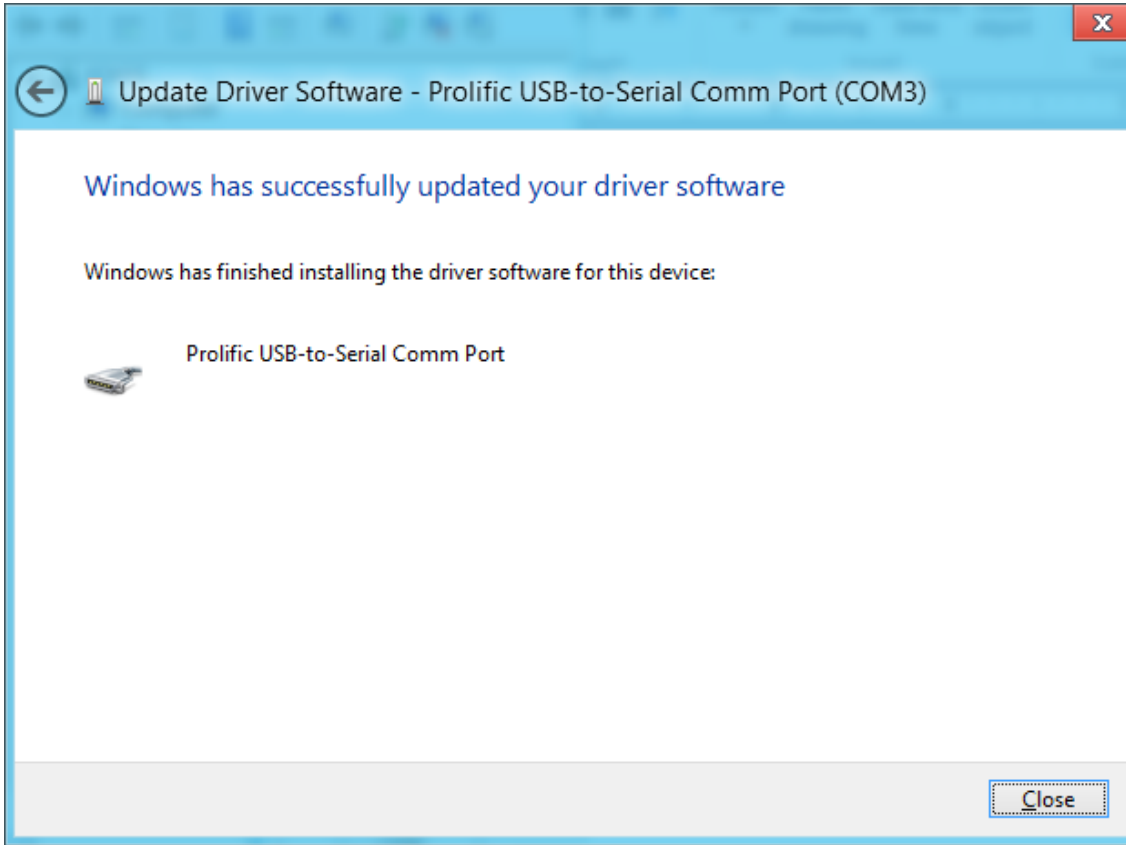


3. Windows will then prompt you that Prolific USB-to-Serial Comm Port (COMx) is installed and ready to use.



4. You can also right-click on the USB-Serial Controller device and click Update Driver.

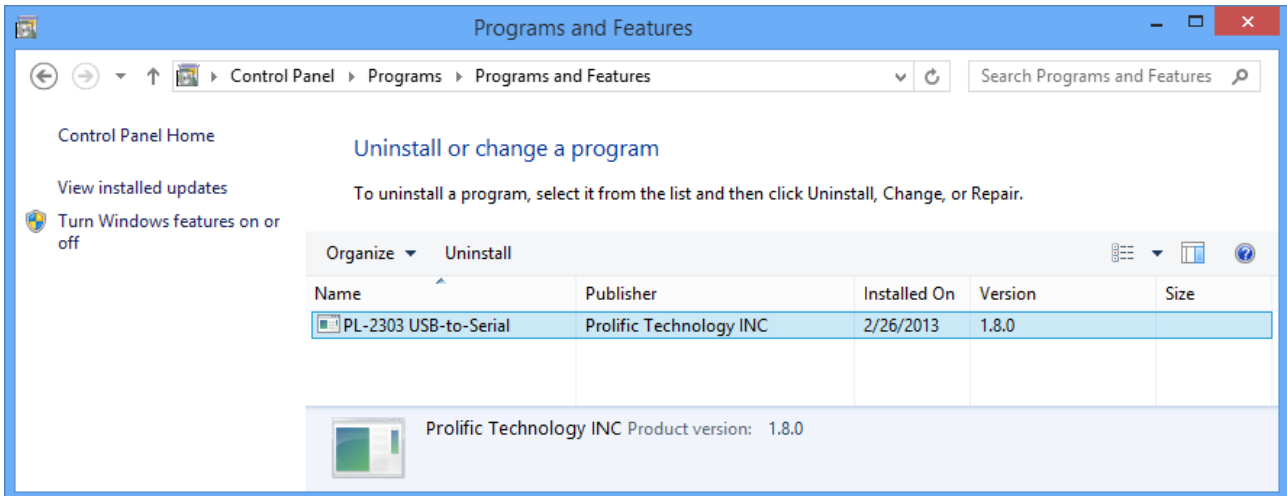




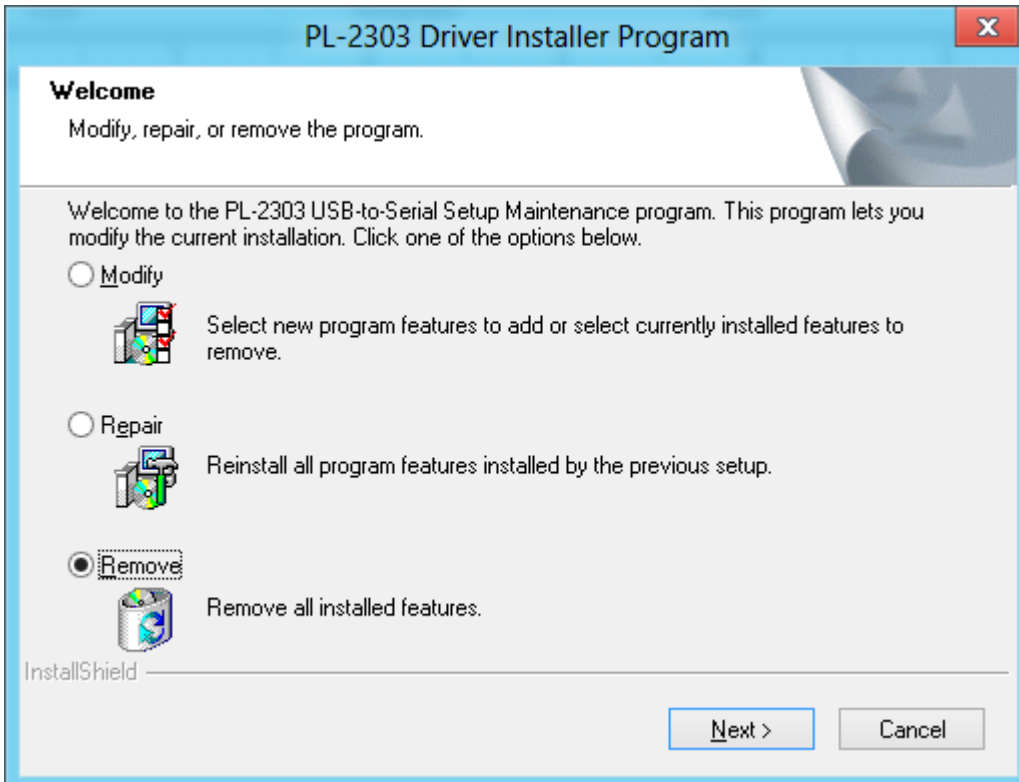
Uninstalling Windows 8 Driver

To uninstall the PL-2303 driver, follow the below steps:

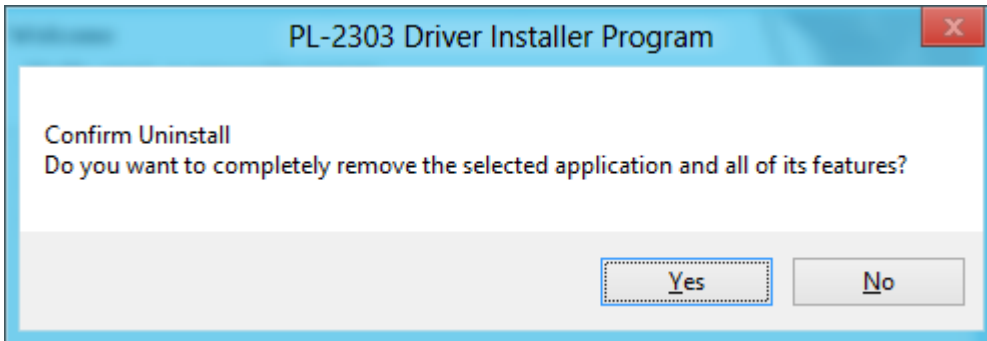
1. Click Start -> Control Panel -> Programs -> Programs and Features -> Uninstall a Program.
Look for the "PL-2303 USB-to-Serial" program and click the Uninstall (Remove) button.



2. InstallShield Wizard will then start the maintenance program and will prompt you to choose if you want to modify, repair, or remove the driver. Click the Remove button and click Next to begin the driver uninstall.



3. The InstallShield Wizard will prompt you to confirm to uninstall. Click Yes to continue.



4. Wait for the InstallShield Wizard to complete the uninstall process. When complete, click Finish to end the program. Wait for some few seconds until the "PL-2303 USB-to-Serial" program is removed from the Control Panel Uninstall (Add or Remove Programs) program list.

